

- **MAWP 345 bar (5000psi)**
- **Adjustable Flow Setting**
- **Automatic Reset**
- **Minimal Restriction to Flow**
- **Simple to Service**
- **Low Pressure-Drop**



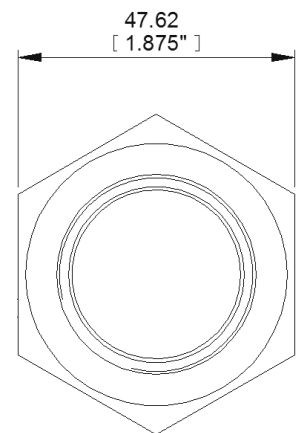
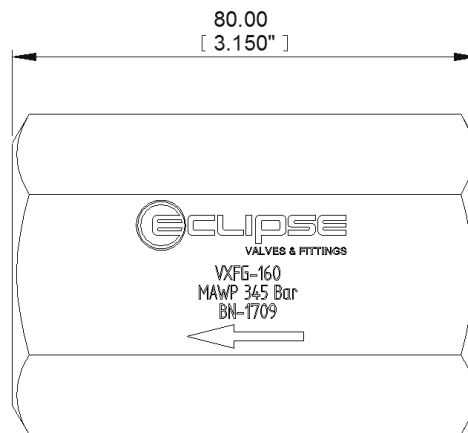
The Eclipse Inline Excess Flow Valve is a safety device designed to limit the release of liquids or gases from a pressurized system in the event of a failure such as a burst hose or fitting. The valve is normally open and will close when the flow rate rises above the setpoint.

The simple resetting process improves usability and reduces downtime, allowing the valve to be reset simply by shutting off the flow of gas or liquid for a short time.

As with all Eclipse products, the VXF series Excess Flow Valves are designed to minimize restriction to flow by using large internal flow paths, which improves the energy efficiency of the system and reduces pressure drop across the valve.

**Specifications:**

<b>Model</b>	VXFG-160
<b>Ports</b>	G 1" (BSPP)
<b>MAWP</b>	345 bar (5000psi)
<b>Operating Temperature</b>	-65°C to 85°C
<b>Setting range</b>	13-30 kg/min (adjustable)



**Materials:**

- Body: Plated Steel
- Internals: Plated Steel/Stainless Steel
- Seals: PTFE, Nitrile

**Chemical Compatibility:**

Suitable for natural gas, inert and non-corrosive gases, oil, water, and most chemical applications. Please advise system fluid when ordering to confirm compatibility.