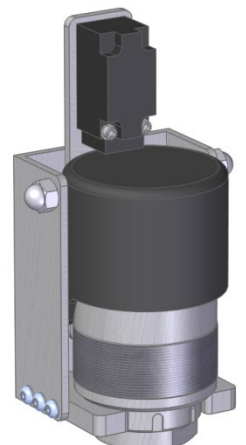
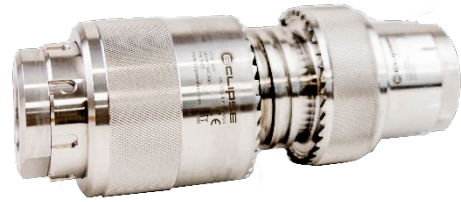


- **1" Full Bore**
- **Higher Flow than ISO 7241-1**
- **5x Safety Factor**
- **Serviceable**
- **Ratchet Locking Ring**

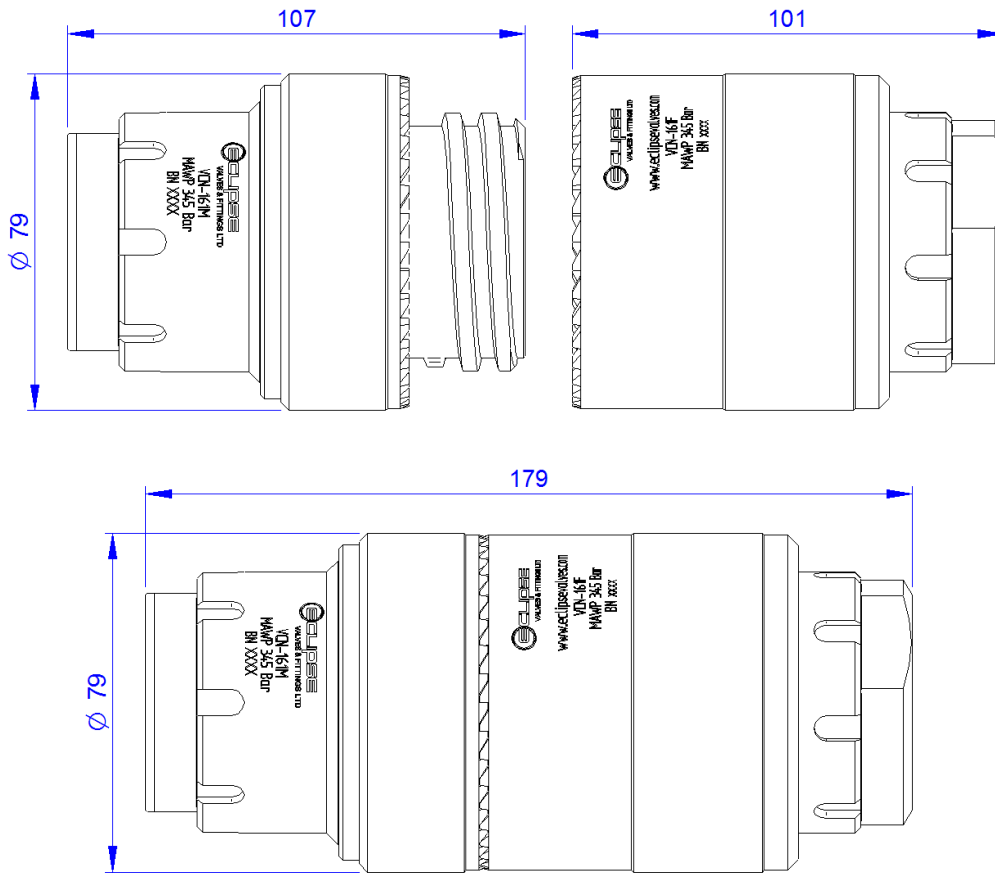
Eclipse's High-Flow Hose Coupling is designed for high pressure gas and oil applications where maximum flow is a priority. Ideally suited for the filling and decanting of CNG trailers. The large bore and low pressure drop leads to lower filling temperatures and higher flow, especially when used in conjunction with our high-flow breakaway couplings and Bison Compression fill and decant panels and systems.

Decant systems often suffer from undersized hose couplings and breakaways, choking the performance of the system, especially at low trailer pressures. Eclipse couplings and breakaways can increase the usable payload considerably – enquire now to discuss how our products can optimize your operation.

- | | |
|-----------------------------|---------------------------------------------------------------|
| MAWP: | 5000psi (350 bar) |
| Cv: | 25 |
| Temperature: | -40°F to 185°F (-40°C to +85°C)
Extra-cold seals available |
| Ports: | 1" FNPT (Standard) |
| Material: | Stainless Steel 304L |
| Options: | Holster with Optional Sensor
Rubber Dust Caps |
| Part Numbers: | VCN-161F (Hose End)
VCN-161M (Trailer End) |
| Fluid Compatibility: | Seals available to suit any fluid |



Contact our Sales team at sales@eclipsevalves.com for more info and pricing.



VCN-161 Coupling: Pressure Drop vs. Flow Rate in CNG

