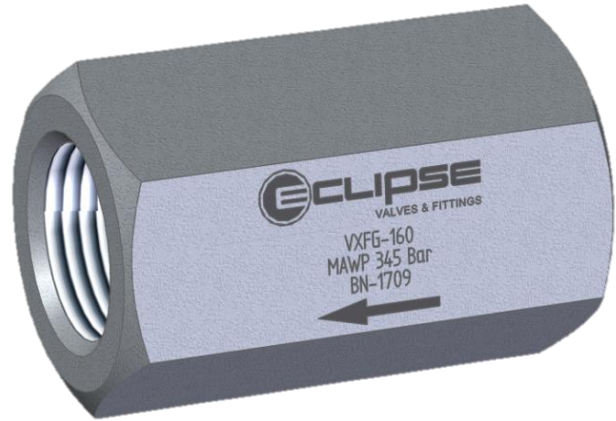


- Adjustable Flow Setting
- Automatic Reset
- Minimal Restriction to Flow
- 345 bar (5000psi) Pressure Rating
- Simple to Service
- Low Pressure-Drop



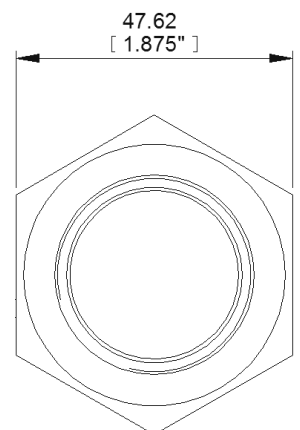
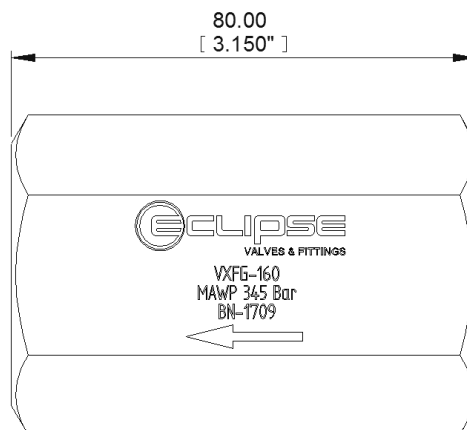
The Eclipse Inline Excess Flow Valve is a safety device designed to limit the release of liquids or gases from a pressurized system in the event of a failure such as a burst hose or fitting. The valve is normally open and will close when the flow rate rises above the setpoint.

The simple resetting process improves usability and reduces downtime, allowing the valve to be reset simply by shutting off the flow of gas or liquid for a short time.

As with all Eclipse products, the VXF series Excess Flow Valves are designed to minimize restriction to flow by using large internal flow paths, improving the energy efficiency of the system.

Specifications:

| | |
|------------------------------|-------------------|
| Model | VXFG-160 |
| Ports | G 1" (BSPP) |
| MAWP | 345 bar (5000psi) |
| Operating Temperature | -65°C to 85°C |
| Setting | Customer spec |



Materials:

| | |
|-----------|------------------------------|
| Body | Plated Steel |
| Internals | Plated Steel/Stainless Steel |
| Seals | PTFE, Nitrile |

Chemical Compatibility:

Suitable for natural gas, inert and non-corrosive gases, oil, water, and most chemical applications. Please advise system fluid when ordering to confirm compatibility.